



Advisory Panel 4:
Public Health, Safety, & Logistics

Metrics Review

December 4, 2020

Community Benchmarks - Status

Benchmark (each measured over prior 14 days)	Status 11/11/20	Status 11/18/20	Status 11/25/20	Status 12/2/20
Avg. daily new case count in Brookline = <10 per 100k people	7.5	10.9	10.8	9.7
Avg. daily new case count in Mass. = <10 per 100k people	20.7	29.4	34.9	35.7
Avg. test positivity rate in Brookline = <5.0%	0.65%	0.94%	0.84%	0.78%
Avg. test positivity rate in Massachusetts = <5.0%	2.29%	3.02%	3.32%	3.73%

Because two of these four thresholds were exceeded, Panel 4 has discussed how we advise PSB to respond. To date, our guidance has focused on enhancements to anti-transmission measures in school. A roll-back to remote-only operations is not warranted at this time, in our view.

Updated MA DPH Color Scale



Massachusetts Department of Public Health COVID-19 Dashboard - Thursday, November 12, 2020
Average Daily Incidence Rate per 100,000 Color Calculations

Incidence Rate Color Table

Group	Population		
	Under 10K	10K-50K	Over 50K
Grey	Less than or equal to 10 total cases	Less than or equal to 10 total cases	Less than or equal to 15 total cases
Green	Less than or equal to 15 total cases	<10 avg cases/100k AND >10 total cases	<10 avg cases/100k AND >15 total cases
Yellow	Less than or equal to 25 total cases	≥10 avg cases/100k OR ≥5% pos rate	≥10 avg cases/100k OR ≥ 4% pos rate
Red	More than 25 total cases	≥10 avg cases/100k AND ≥5% pos rate	≥10 avg cases/100k AND ≥4% pos rate

Brookline is here as of 12/2/2020 (just under the green-yellow cutoff)

Brookline's population is ~60,000

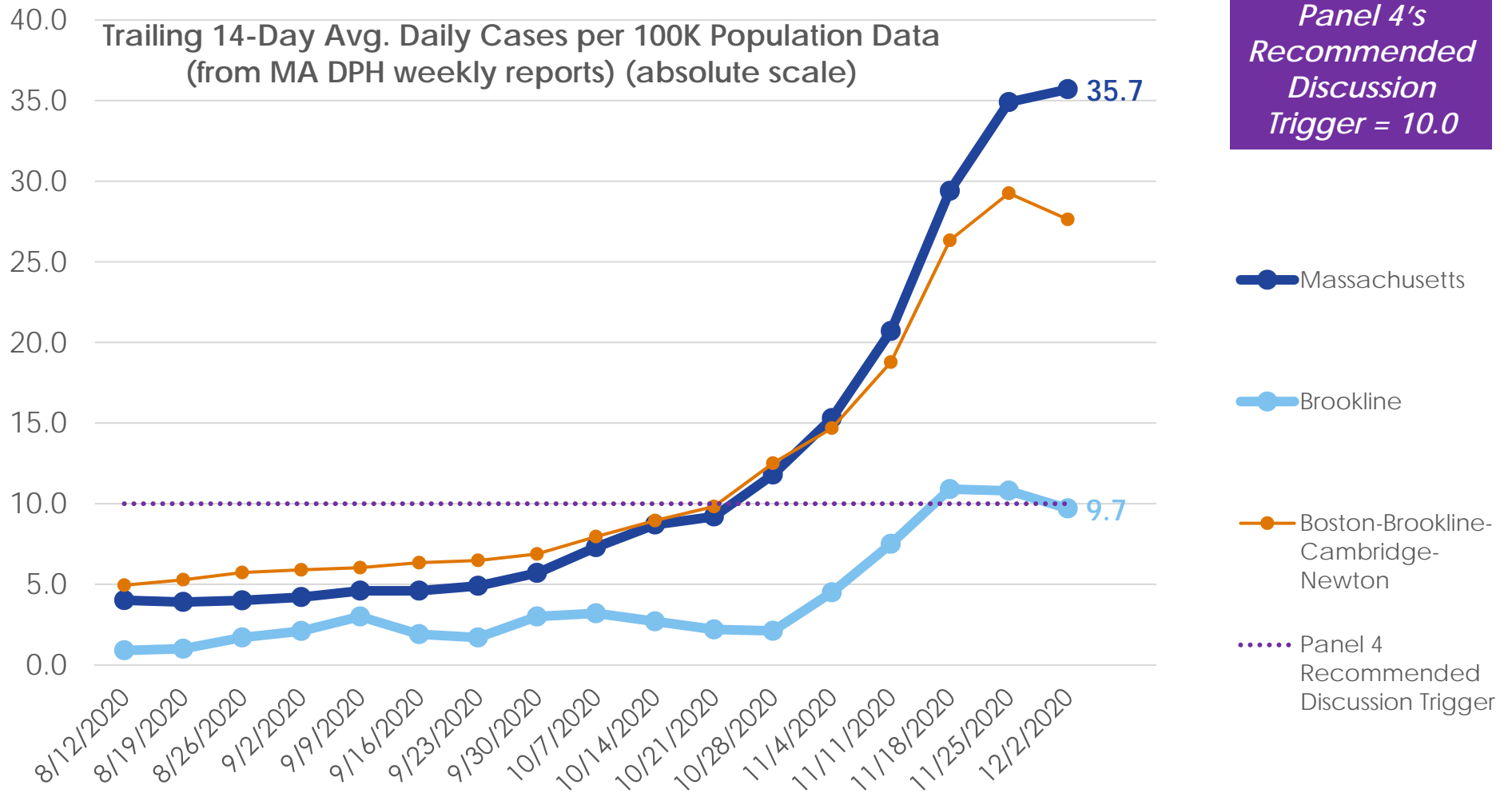
As of 11/5, DPH is using 2019 population estimates derived from a method developed by the University of Massachusetts Donahue Institute. The 2019 estimates are the most currently available data.

What does the 10 cases/100,000 population metric actually mean?

- The metric is based on the average daily new cases over the measuring period (14 days in our case)
- 10 new cases/day per 100k people = 0.01% of the population is being diagnosed COVID+ each day (1 in 10,000 people)

Cohort	Population	Expected New Cases Per Week
Town of Brookline residents	~60,000	Roughly 40
PSB student body	~7,500	Roughly 5
PSB staff	~1,500	Roughly 1

Community Benchmarks - Status



Sources: <https://www.mass.gov/info-details/covid-19-response-reporting# covid-19-weekly-public-health-report->

Statewide Case Count



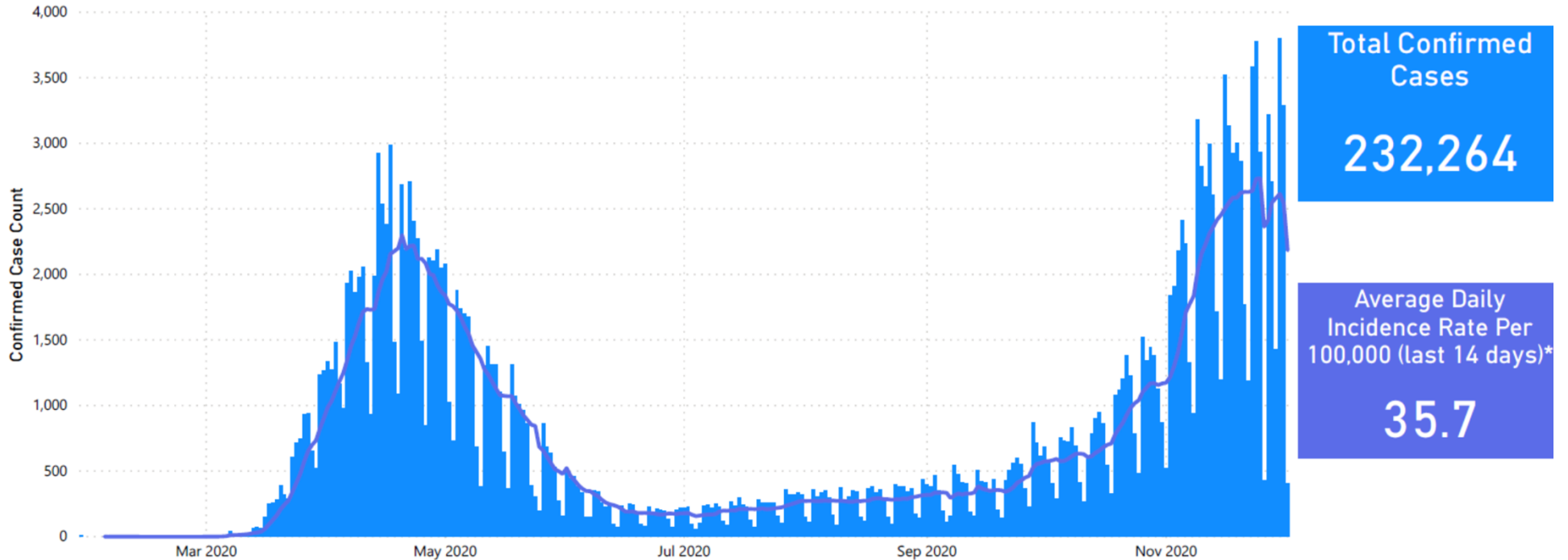
Massachusetts Department of Public Health COVID-19 Dashboard-

Thursday, December 03, 2020

Daily Confirmed Cases (Since March)

Confirmed COVID-19 Cases To Date by Date Individual Tested

● Confirmed Cases by Date ● 7-Day Average Confirmed Case Count

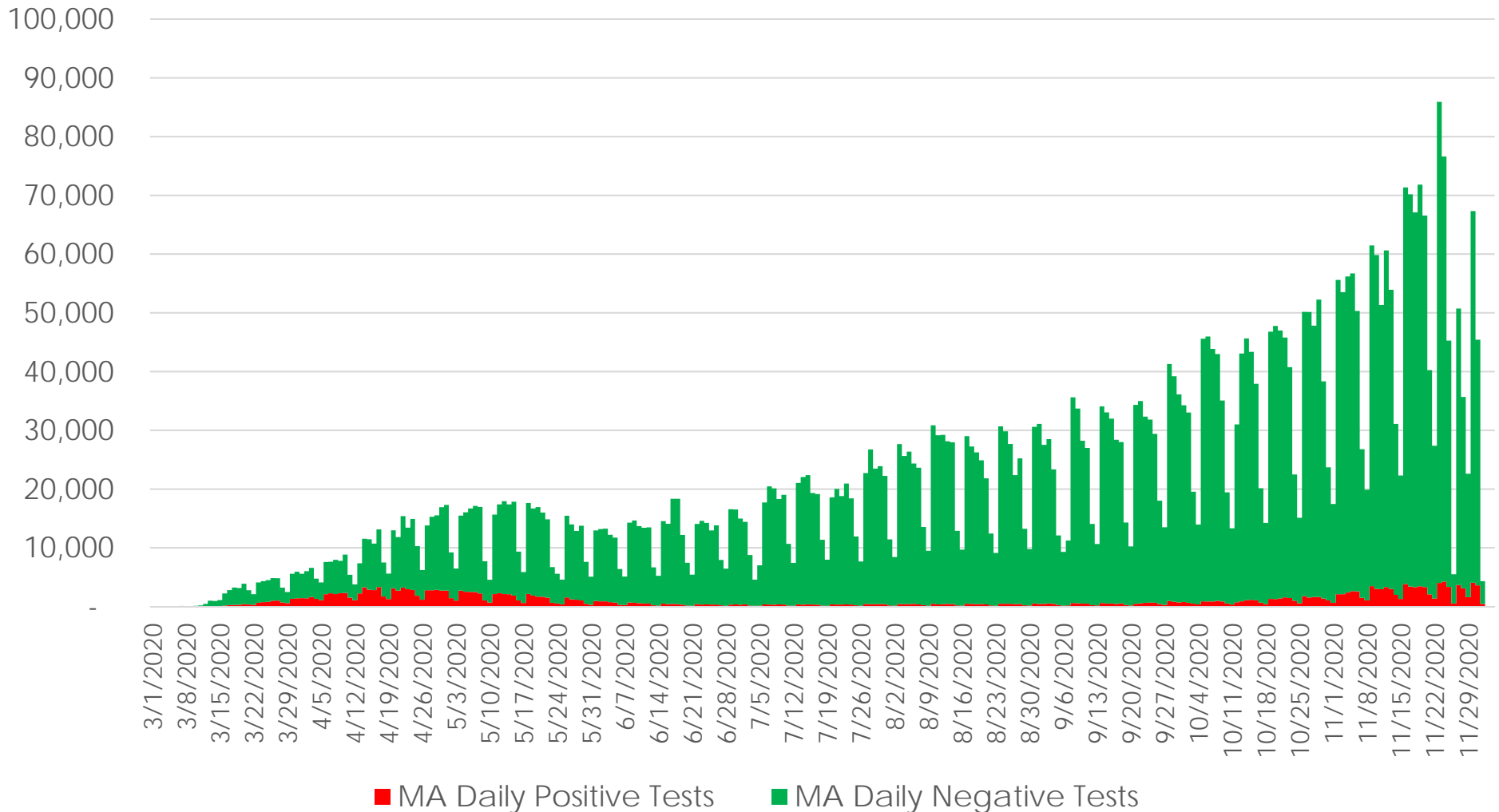


Data Sources: COVID-19 Data provided by the Bureau of Infectious Disease and Laboratory Sciences; State Population Estimate 2019: Small Area Population Estimates 2011-2020, version 2019, Massachusetts Department of Public Health, Bureau of Environmental Health; Tables and Figures created by the Office of Population Health. Note: all data are current as of 11:59pm on 12/2/2020. Due to lag in reporting by laboratories, counts for most recent dates are likely to be incomplete.

*Last updated Wednesday, 12/2/2020; Covers 11/15/2020-11/28/2020.

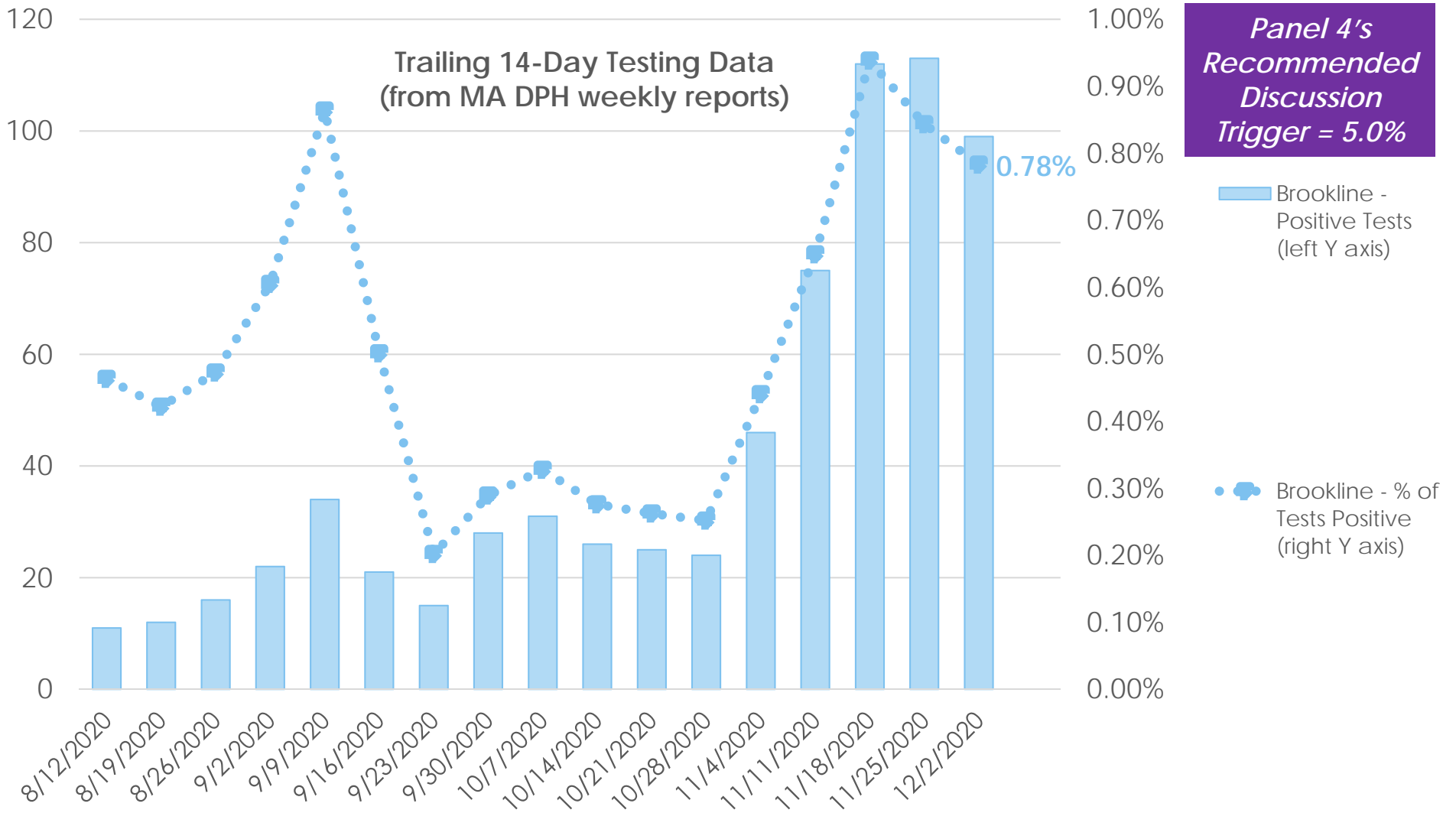
Statewide Case Count

MA Daily Testing History



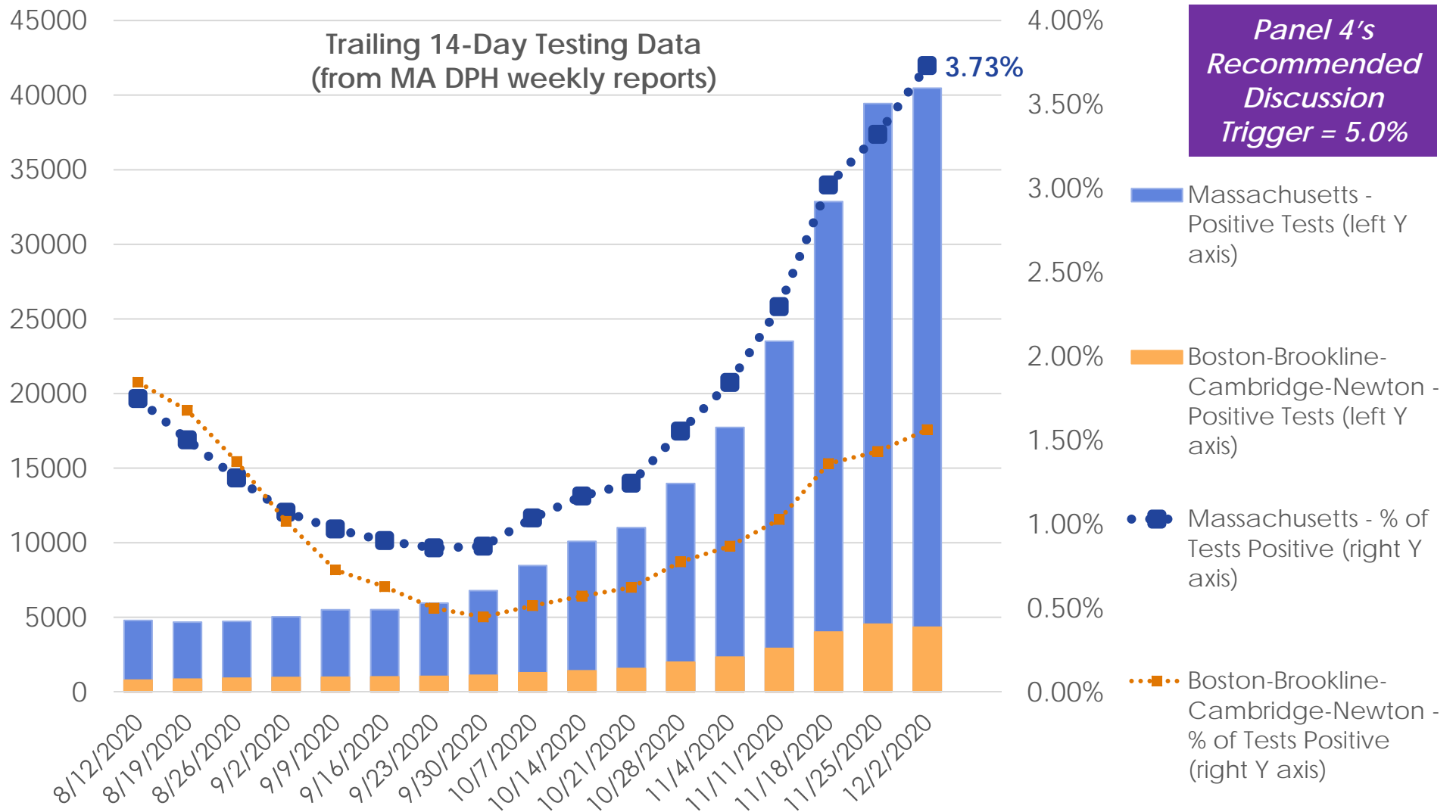
Source: <https://www.mass.gov/info-details/covid-19-response-reporting>

Community Benchmarks - Status



Source: <https://www.mass.gov/info-details/covid-19-response-reporting# covid-19-weekly-public-health-report->

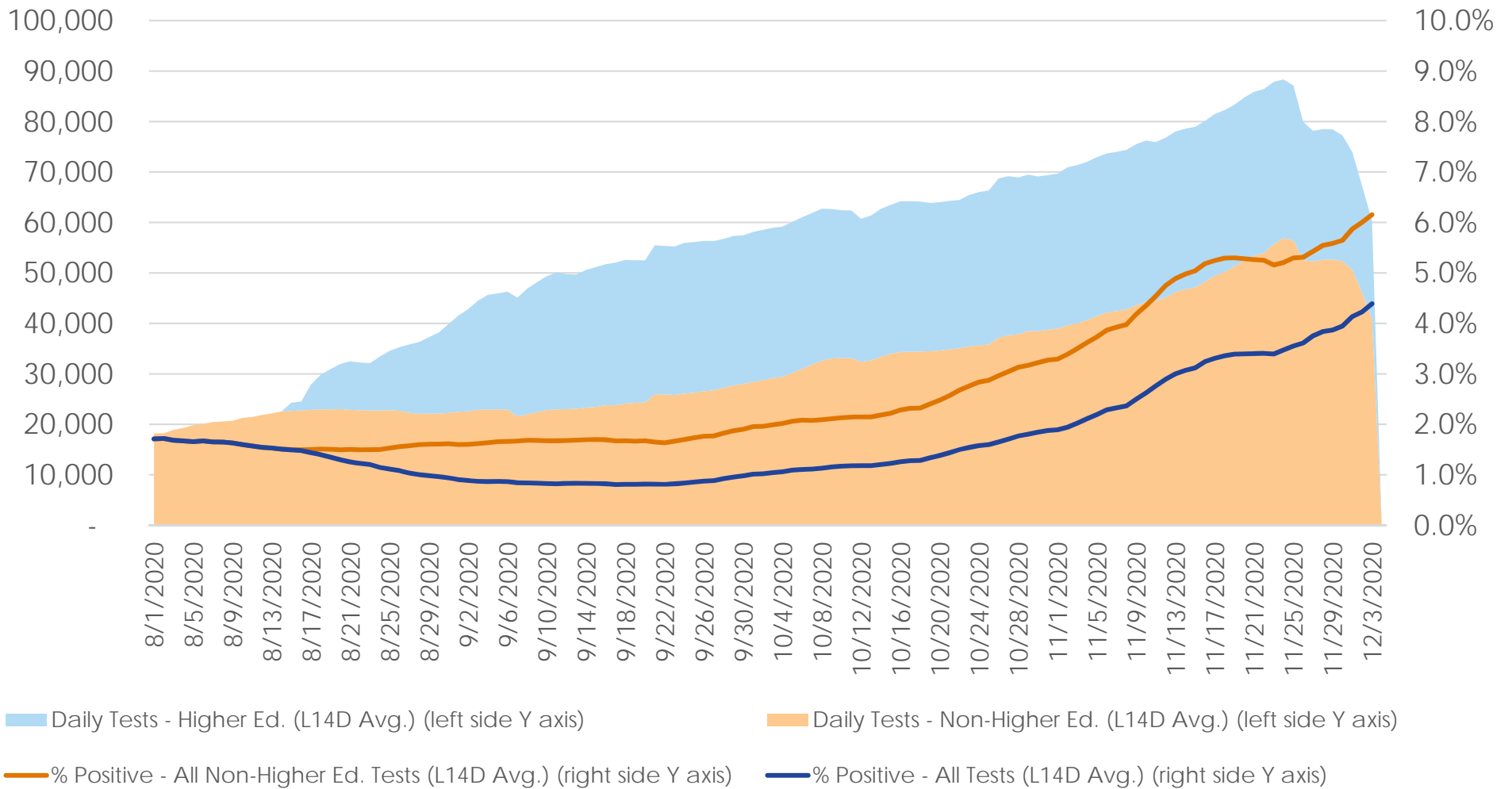
Community Benchmarks - Status



Source: <https://www.mass.gov/info-details/covid-19-response-reporting# covid-19-weekly-public-health-report->

Statewide Test Positivity

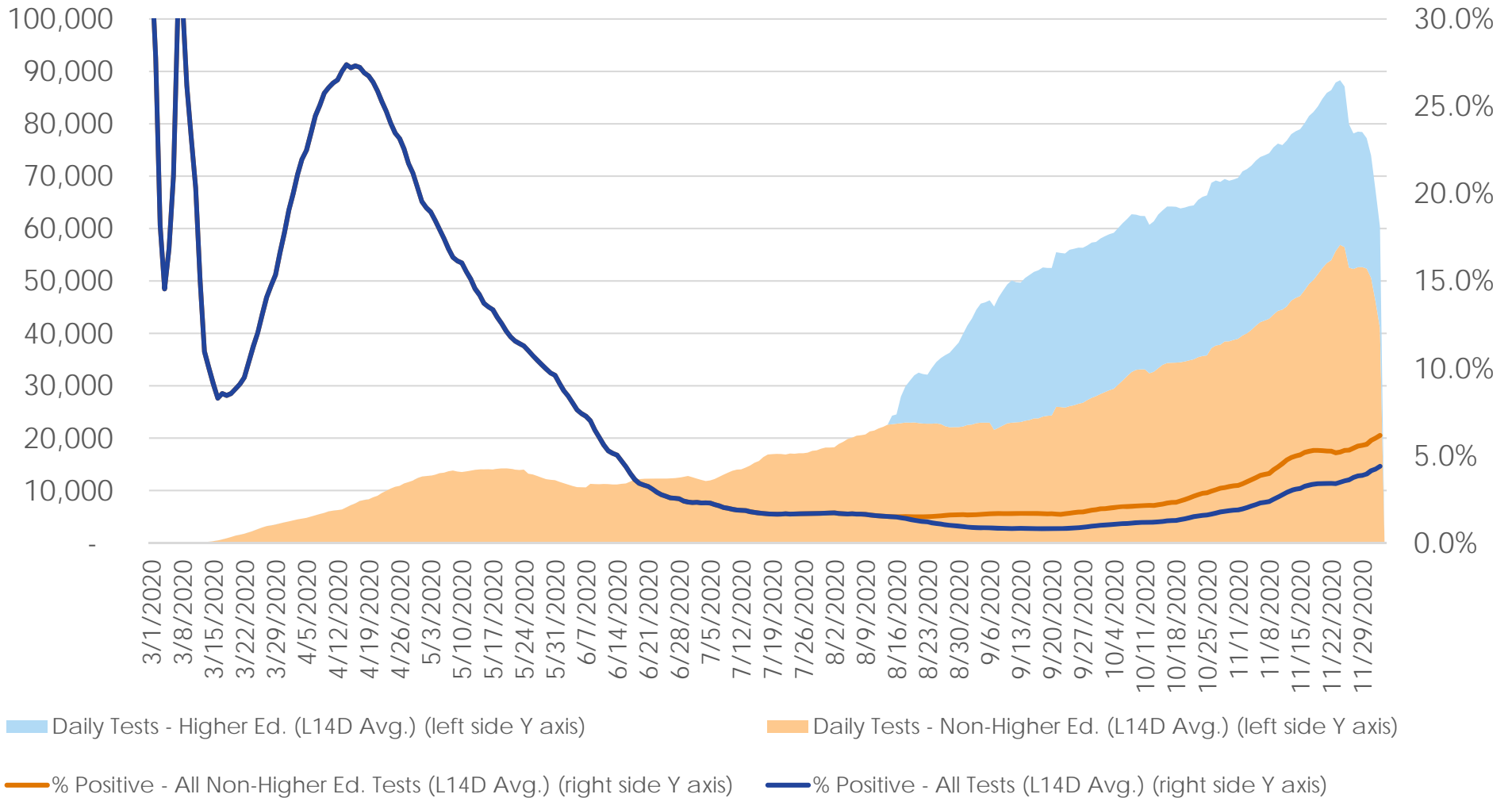
MA Statewide Test Positivity



Source: <https://www.mass.gov/info-details/covid-19-response-reporting>

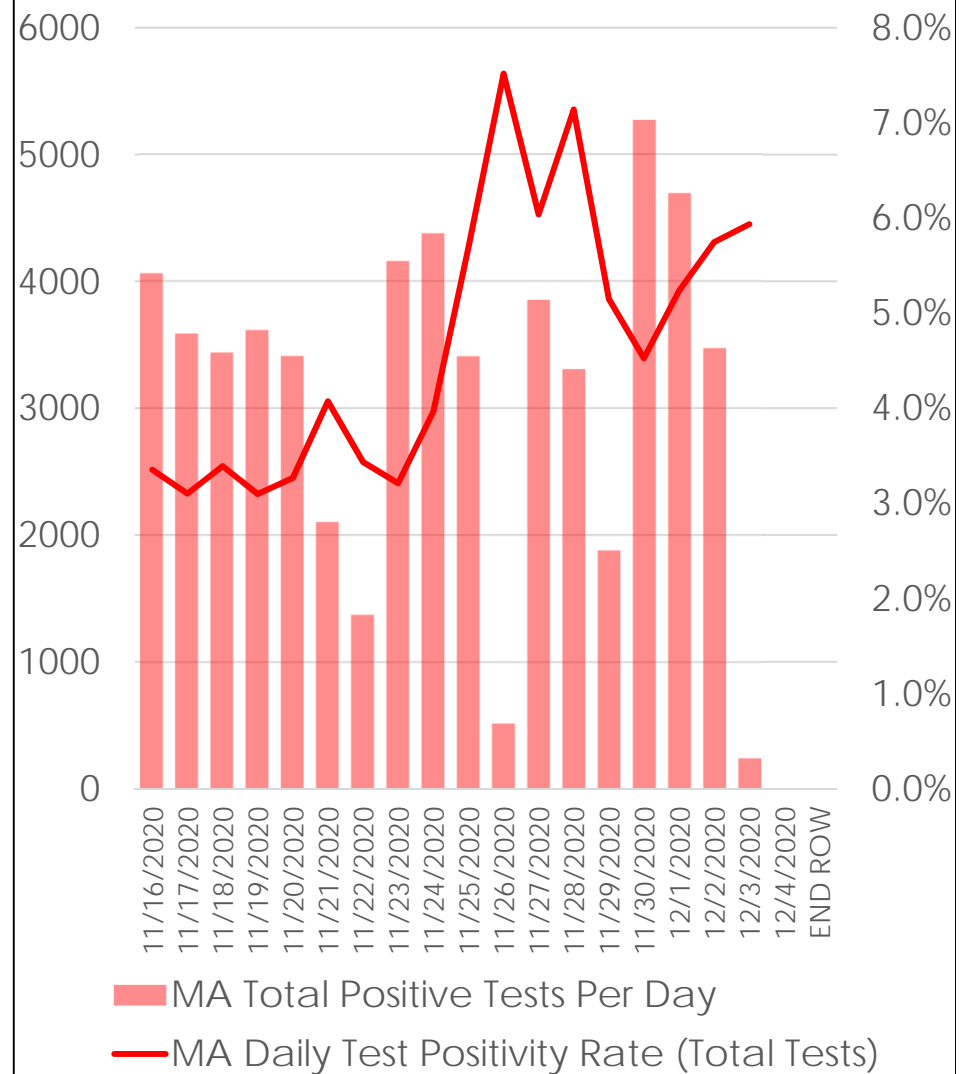
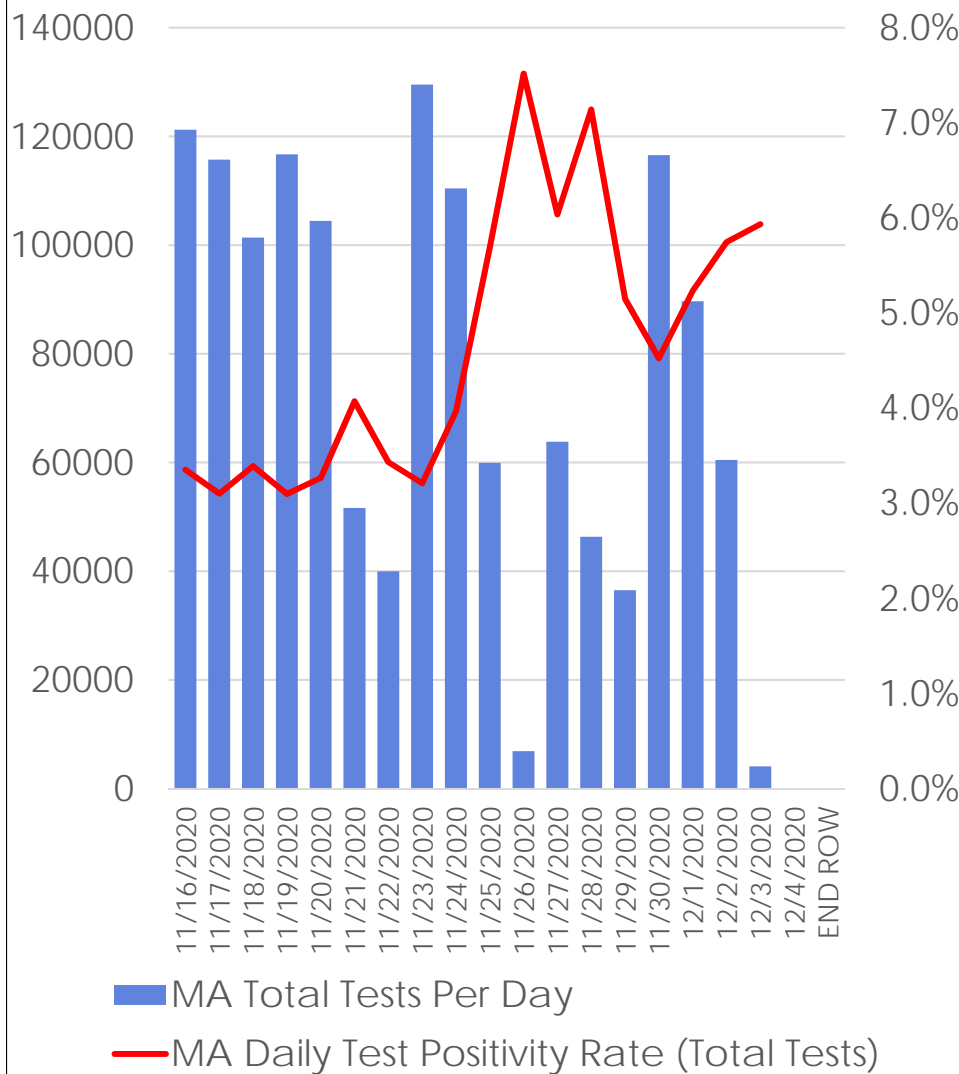
Statewide Test Positivity

MA Statewide Test Positivity



Source: <https://www.mass.gov/info-details/covid-19-response-reporting>

Statewide Daily Test Data



Source: <https://www.mass.gov/info-details/covid-19-response-reporting>

Statewide Daily Positive Tests By Age Group

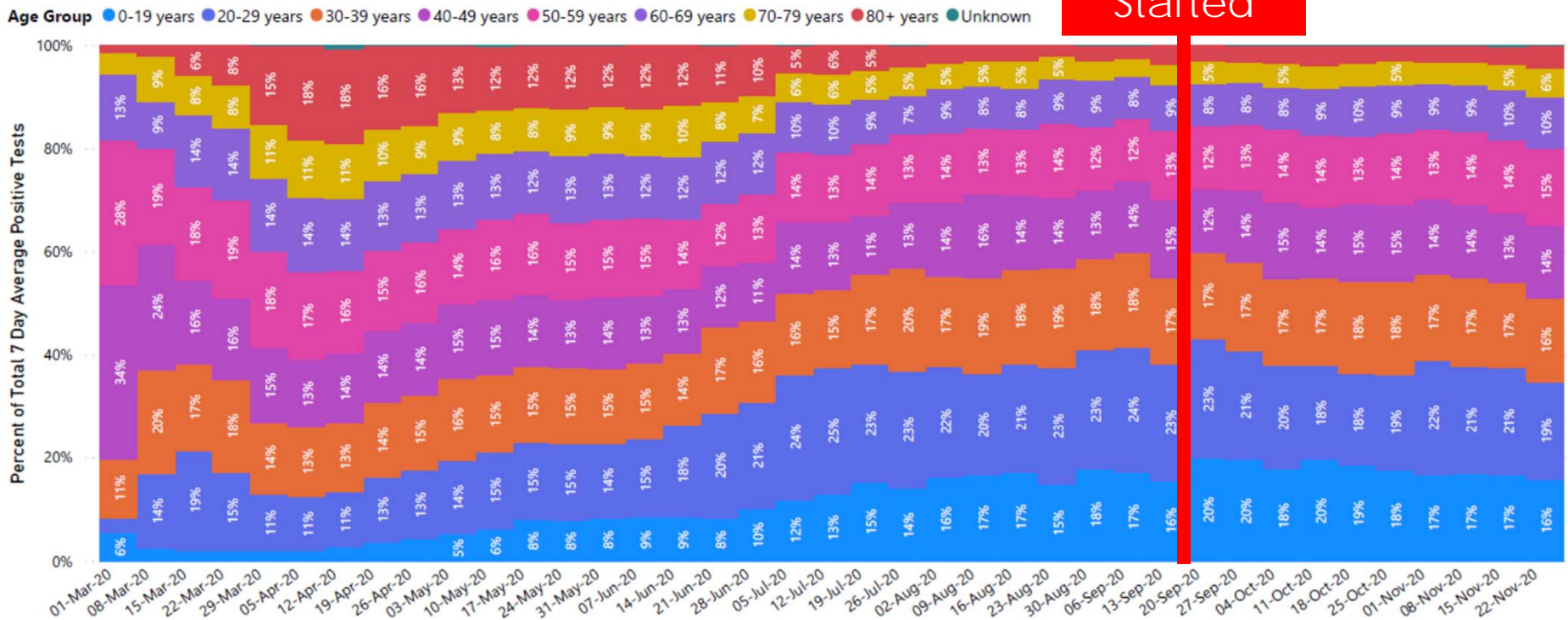


Massachusetts Department of Public Health COVID-19 Dashboard - Thursday, December 03, 2020

Positive Tests by Age Group

K-12 School Started

Percent Positive by Week and Age Group



Full Week of Testing Starting on the Date Shown

Data Sources: COVID-19 Data provided by the Bureau of Infectious Disease and Laboratory Sciences; Tables and Figures created by the Office of Population Health.
 Note: this data was last updated on Wednesday, 12/2/2020 . This includes individuals who have had more than one molecular test.

Current MA DESE Guidance

<https://www.doe.mass.edu/covid19/on-desktop/interpreting-dph-metrics.html>

- *Districts are expected to prioritize in-person learning across all color-coded categories, unless there is suspected in-school transmission, in accordance with DESE's Guidance on Responding to COVID-19 Scenarios. Transmission in schools is defined as spread of the virus between people during interactions in the school setting. While there have been positive COVID-19 cases of staff and students in schools, most of these infections have occurred outside of the school setting. If there is suspected in-school transmission, then the affected classrooms or schools should temporarily shift to remote learning, in accordance with DESE's Guidance on Responding to COVID-19 Scenarios. Classrooms and schools should reopen after appropriate mitigation strategies have been implemented, as determined in consultation with the local board of health, DPH, and DESE.*

Current MA DESE Guidance, ctd.

<https://www.doe.mass.edu/covid19/on-desktop/interpreting-dph-metrics.html>

- *Districts and schools in communities designated gray, green, or yellow are expected to have students learning fully in-person, if feasible. A hybrid model should be used only if there is no other way to meet health and safety requirements. Parents and caregivers will continue to have the option to choose a district's remote learning program for their children.*

- *Schools in red communities should implement hybrid models, while maximizing in-person learning time for high-needs students.*

- ...

- *Fully remote instructional models should be implemented only as a last resort in classrooms, schools, or districts when there is suspected in-school transmission or a significant municipal outbreak, in accordance with DESE's Guidance on Responding to COVID-19 Scenarios. Classrooms and schools should reopen after appropriate mitigation strategies have been implemented, as determined in consultation with the local board of health, DPH, and DESE.*